

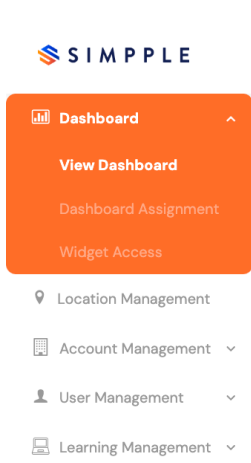


**DASHBOARD MODULE**

# **Creating and Editing Dashboards**

SIMPPLE.AI

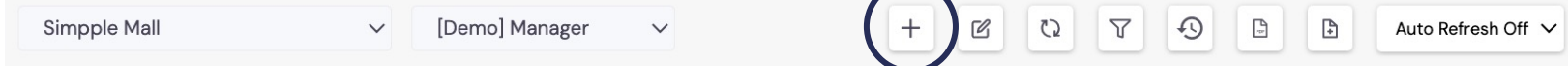
# Creating a new dashboard



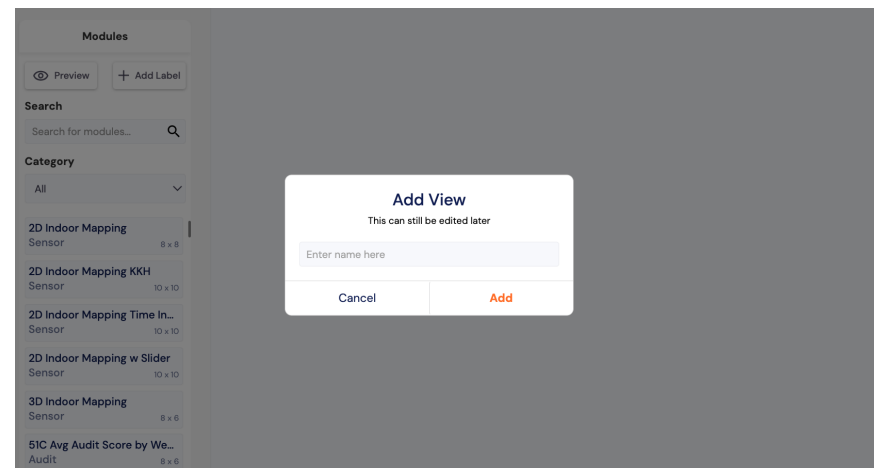
- Navigate to the *View Dashboard* section of the Simpple menu
- Select *Site* and *User* and your selected dashboard will load

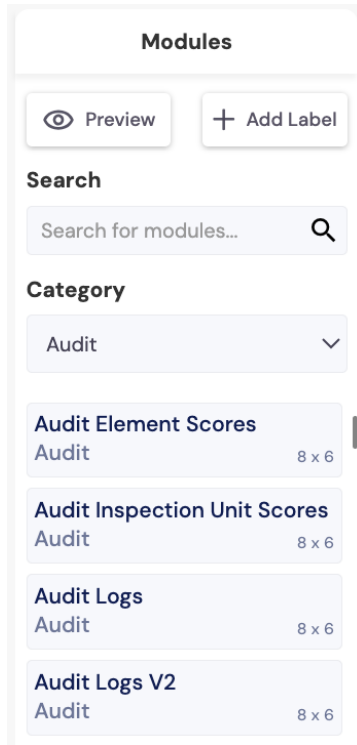
- Click the + icon to create a new dashboard

## Simple Mall Manager Dashboard



- Add a name for your Dashboard View and click *Add*






- Find the correct widget through the *Search Bar* or *Category* drop down

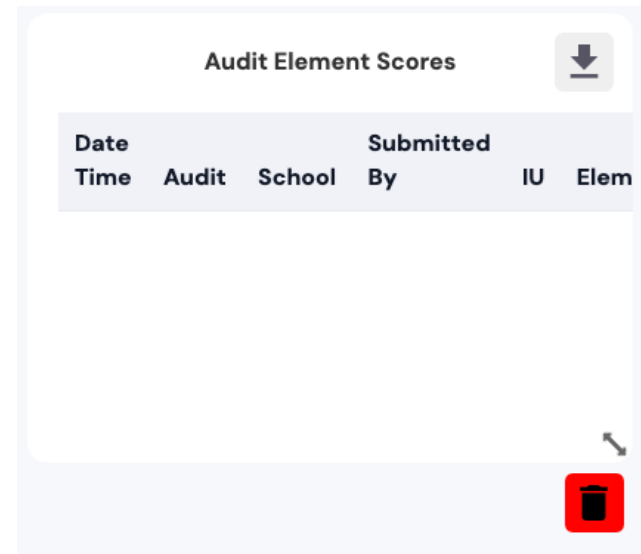
- Click on the required widget to add it to the dashboard editor

- Multiple widgets can be added simultaneously and rearranged freely

- The widget can be dragged and dropped freely around the page

- Use the  to resize the widget and the bin icon to delete it

- Use the  button in the top right corner to save the new dashboard



# Key Functionality

